

FillStar[™] WATER LEVEL CONTROL SYSTEM

For Swimming Pools and Spas

Constant changes in water level can cause extreme damage to your pool equipment and in particular your pump system.

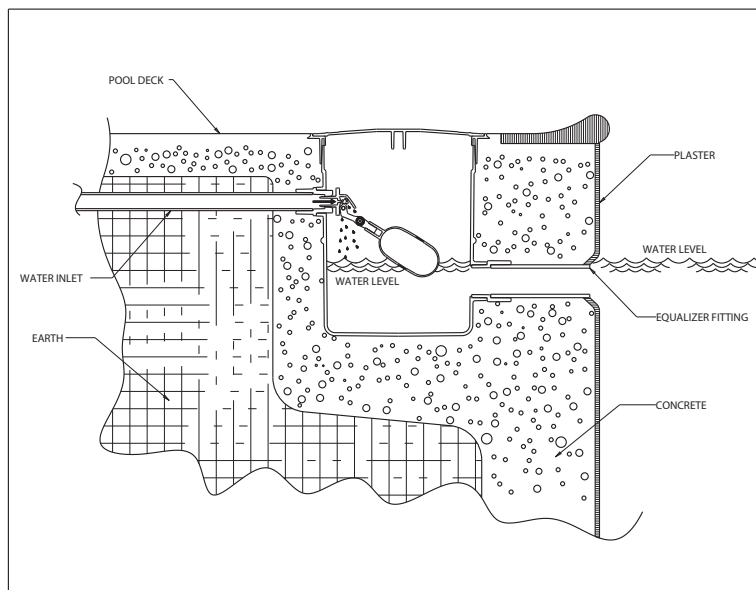
The FillStar water leveler control system solves this problem by maintaining a constant and consistent water level in your pool or spa.

This easy to install FillStar system reduces the need for continuous water monitoring since it is designed with adjustable presets and overflow protection.

PLACEMENT INSTRUCTIONS

To ensure accurate performance and maintain the warranty, AquaStar recommends the following placement guidelines:

- The auto fill unit must be level with the deck.
- The equalizer line must follow the guidance of the diagram be-



Use of this product is the sole responsibility of the consumer. Any consumer installing and/or using this product agrees to release AquaStar and all the officers, agents, owners, affiliates and subsidiaries, whether direct or indirect, from any liability based on cmts or damages caused by incorrect installation and/or usage of this product. Any claims brought against the company will be limited to the actual cost the consumer paid.

INSTALLATION INSTRUCTIONS

Backflow

The installation of the FillStar Water Level Control System should be aided by a device designed to prevent reverse flow. Some examples of such a device are an anti-siphon or a double-check valve.

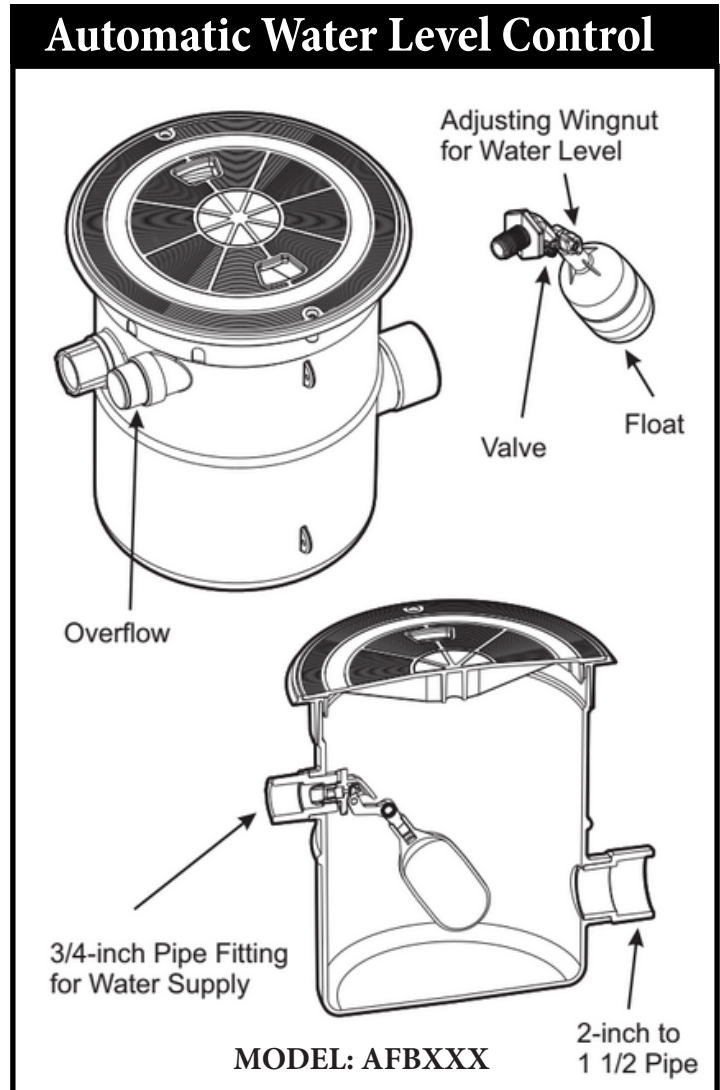
Overflow

An opening for overflow protection is built into the AquaStar Water Level Control system.

To install the unit without the overflow protection, seal the opening with the 1/2 inch plug included in the packaging. All connections are PVC and *do not* require transitional glue.

NOTE: CHECK THE LINE FOR LEAKS BEFORE PROCEEDING WITH THE INSTALLATION.

Take particular care when installing the float lever. The entire assembly should be done by hand, and each adjustment should not exceed 1/4 of a turn.



OPERATION INSTRUCTIONS

The FillStar Water Level Control System is compact and easy to use. Simply adjust the water level to your preferred setting and the control system will do the rest.

You can adjust the water level by loosening the adjusting screw and moving the float up or down. Once the float is in the desired position, tighten the screw to secure the setting.